

# 修复健康质量

A microscopic view of several cells, likely stem cells, showing their internal structure and nuclei. The cells are illuminated with a blue and purple light, creating a futuristic and scientific atmosphere. The MF PLUS logo is visible in the top right corner of this section.

MF<sup>+</sup>

## MF PLUS 冷冻器官制剂系列

健康是人生宝贵财富。MF PLUS以其卓越冷冻保存再生疗法方案，作为对此理念的信奉并推崇，并通过冷冻器官制剂系列产品使之更加完美。通过细胞疗法，从大自然生物汲取精华，享受最好健康。

A microscopic view of several cells, likely red blood cells, showing their characteristic biconcave shape and bright red nuclei. The cells are clustered together, with some in sharp focus and others blurred in the background, creating a sense of depth. The overall color palette is dominated by the red of the nuclei and the pale pink of the cytoplasm and surrounding fluid.

# 何谓细胞疗法？

细胞是人体组织、器官和其他复杂的相互依存系统之基本构件。细胞更新过程持续不断地产生新细胞以替换受损、成熟或凋亡细胞，以维持人体功能运作。随着年龄的增长，组织自然修复速度减慢并导致更高的健康风险，如过早衰老和退化。

MF PLUS针对细胞修复过程，提供冷冻细胞、胜肽和其他富含必需氨基酸的天然精华，以重振身体机能替代和修复受损组织或器官。以求达至其特殊水平，细胞疗法被认为是促进健康和抗衰老的最全面及有效的方法。生命之取解决方案。

# 为何选择细胞疗法？



多重效益与恢复功能



杰出治疗技术



让受损器官重获新生



修复组织与细胞更新



不含防腐剂及稳定剂



安全法规和质量保障

细胞疗法或有可能替代传统疗法。



# MF+ 简介

## 冷冻器官制剂系列

随着时间的推移，衰老和退行性疾病导致器官细胞和组织退化，肌体系统（循环系统、神经系统、呼吸系统、消化系统、骨骼系统、肌肉系统、内分泌系统等）亦无法避免不受影响，最终影响我们的生活质量。

从大自然的生物精华和现代生物医学技术汲取灵感，MF PLUS精心策划配制冷冻器官制剂物系列以解除相关问题；先进低温保存过程，保留非合成胜肽与细胞的高生物活性。此方法确保胜肽与细胞的生理完整性和使用时的高生物活性。然而，胜肽和细胞本身不含任何防腐剂或稳定剂 - 此乃自然、技术和奢侈品的真正融合。

### 承诺为您提供精致品质

我公司在马来西亚提供优质产品与先进生物技术已有30余载。是马来西亚首次兼唯一拥有无特定病原体（SPF）来源之冷冻低温技术公司。

冷冻器官低温剂(FOC)和冷冻胜肽(FOP)配制程序完全符合欧洲生产制作条规，欧洲规范乃是最严谨之安全和质量保证条例。

原料采选自欧洲国家认证的封闭式饲养羊群，羊只自1973年开始饲养，已有40余代，其饲养要求已超越世卫组织的50条指南与75项参数，及获美国FDA认证，达到无特定病原体(SPF)及无病毒抗原(VAF)之要求。

### 认证 • 优质 • 安全 • 有效

#### 健康替代方案



钻石峰会大奖



#### Best Enterprise Award

##### 最佳企业大奖

2014年，获得英国牛津，苏格拉底委员会，欧洲商业协会（欧洲商业协会研究中心）之生物医学领域大奖。



#### International Quality Standard 2014

国际质量标准奖，2014瑞士质量标准研究所 (SIQS) 认证，产品/服务符合国际品质标准。



DOUBLE GOLD MEDAL WINNER  
GENEVA INVENTION 2011

· 最佳创新成分  
· 最佳配方



金牌奖，中东国际发明大会，2011



赢得最有效营销活动冠军



进入最具创新性成分决赛



#### Asia Pacific Excellent Award

· 卓越品牌  
· 卓越产品  
· 卓越领导力





## 主要来源和技术

MF PLUS冷冻器官制剂系列是绵羊胜肽与细胞，选用冷处理，冷萃取，杀菌消毒，低温保存及专有输注技术。



## MF PLUS冷冻器官制剂系列之独特属性

- ✓ MF PLUS系列产品之最强盛及最鲜活产品。
- ✓ 完整细胞，含更多重要细胞成分。
- ✓ 种类繁多，备有各种器官细胞，多肽和组合。
- ✓ 196°C的液氮高速冻结，避免活性成分变性，从而保存细胞结构与细胞提取物的酶活力。
- ✓ 不含任何防腐剂或稳定剂。



## 谁会受益？

推荐给需要有更强盛细胞以协助解除现有健康问题者，欲寻求加强整体抗衰老者。体验我公司顶级细胞疗法系列产品所能提供的最佳服务。

- 冷冻胜肽 (FOP)
- 冷冻器官低温剂 (FOC)

## 哪个适合您？

### 冷冻胜肽 (FOP)

- 胜肽
- 来源：绵羊
- >700 kDa
- 中等效果与效益
- 支持治疗 - 病症，抗衰老，完成主要治疗后之维持方案选择
- 短期/中期方案

### 冷冻器官低温剂(FOC)

- 完整、活细胞
- 来源：绵羊
- >700 kDa
- 效果更快，效益更高
- 主要疗法 - 针对慢性病及管理抗衰老过程之首选方案
- 长期方案



## 冷冻器官低温剂(FOC)

- + 针对病症与衰老问题之修复方案
- + 每种器官细胞类型，平均细胞量为7千万
- + 主要疗法 -- 针对个人具体需求
- + 长期方案
- + 完整、活细胞提取物
- + 五星级效果与高效益

## 冷冻器官低温剂(FOC)机制



完整细胞



人体

冷冻器官低温剂(FOC)治疗，以完整细胞修复特定细胞。备有100余种细胞与组合供选择。每个器官及特定器官的病情诊断，使用特定不同细胞。



## 冷冻胜肽 (FOP)

- + 退行性疾病和衰老问题方案
- + 冷冻器官低温剂治疗后，作为维持疗程
- + 短期/中期方案
- + 胜肽提取物
- + 4.5星级效果与效益

## 冷冻胜肽(FOP)机制



肽类提取物



人体

冷冻胜肽(FOP)，使用提取自完整细胞的胜肽。冷冻胜肽(FOP)的深切冷冻胜肽选用先进分离术和生产方法特别配制而成。冷冻胜肽(FOP)由5种细胞所组成。

# 如何使用 MF+<sup>™</sup> 冷冻器官制剂系列？



## 治疗前

治疗前1周：

- 避免饮酒、吸烟和不必要的治疗措施。
- 避免日光浴、桑拿浴、接触X射线和过度体力劳动。
- 比平时多喝白开水（至少1.5升）。
- 血液检查。



## 治疗期间/后

- 建议1个疗程后，休息2-3天。您的医生会根据个人情况提供建议。
- 避免/克制吸烟和体力劳动。
- 由医生决定在此特殊期间的饮食和药物。



## 治疗后

- 使用 后，受治者感觉活力增加，并体验有病情改善。
- 最初可能会有轻微疲劳和短期的情绪困扰，但会在两周内过渡至轻松阶段。
- 疗效在第3或第4周内变得明显，疗效维持至少4至6个月。整体健康状况明显改善 ---包括 身心健康，目标器官功能，营养供应和整体健康。

注意：仅根据专业医生推荐的方案使用。

法律免责声明: 所有信息仅供参考。不建议作为专业医学治疗或建议之替代。

欲获得更准确评估和治疗处方，请咨询您的医生。



为何是 **MF+** 冷冻器官低温剂

Frozen Organo Range?

冷冻器官低温剂

与其他产品比较

| 产品    | 间质干细胞 (MSC)           | 高浓度血小板血浆 (PRP)         |
|-------|-----------------------|------------------------|
| 提取来源  | 人类；脐带组织 (华通氏胶)        | 人类；血液来自患者本身，经过两次离心分离阶段 |
| 来源    | 年轻及成年人捐赠脐带组织          | 自身提取                   |
| 风险    | 缺乏捐赠                  | 提取不健康细胞                |
| 有利于   | 血细胞、免疫细胞、间充质干细胞       | 非特定或完整细胞               |
| 干细胞量  | 仅有某些细胞，而且数量有限         | 不适用，仅含生长因子             |
| 可得性   | 成熟婴儿胎盘                | 细胞年龄与患者同龄              |
| 排斥可能性 | 或有排斥反应风险              | 不适用                    |
| 机制    | 将干细胞注入体内，仅对有限器官产生归巢作用 | 激活受赠者自身细胞，使其发挥作用       |
| 供应    | 人类捐赠的有限性              | 供应足够                   |
| 细胞计数  | 细胞类型有限                | 无活细胞                   |

冷冻器官制剂系列 (FOC)

绵羊；取自以封闭方式饲养40余代绵羊群之脐带组织，符合欧洲最严谨的安全和质量保证条例

提取自绵羊，绵羊经质量控制

对绵羊细胞过敏

根据病人需要，提供具体处方

高数量

安全，取自羊胎，零岁

排斥风险低

细胞注入体内，归巢至患者特定受损器官，引发自体自身干细胞发挥作用。

绵羊，获得足够供应

每5瓶含2500-3500万活细胞

值得深思:了解材料选用过程背后的历史, 足于保证我公司产品质量与有效性。



# 冷冻器官制剂系列 Frozen Organo Range

## 一般建议



### 1 胸腺

- 生物性癌症疗法
- 自身免疫性疾病
- 运动器官之退行性疾病
- 病毒性疾病



### 2 脾脏

- 免疫力低弱,所有类型
- 生物性癌症疗法
- 慢性炎症
- 贫血



### 3 间质细胞

- 免疫力低弱, 所有类型
- 慢性炎症
- 骨髓衰弱
- 风湿病、关节侵蚀
- 生物性癌症疗法



### 4 肺

- 所有类型之慢性支气管病和肺疾（特别是支气管炎，肺虚弱，肺炎后哮喘）



### 5 胰腺

- 慢性消化功能紊乱，成人发病型糖尿病
- 胰腺炎后虚弱



### 6 肝

- 慢性消化功能紊乱、胀气
- 肝炎后虚弱、肝硬化
- 胆囊疾病



### 7 胎盘

- 更年期症状
- 血管疾病（血管硬化、心脏病）
- 荷尔蒙失调
- 血压问题



### 8 心脏

- 心血管病
- 预防心肌梗塞与病后护理
- 压力治疗
- 心肌脂肪变性、心绞痛



### 9 肾

- 所有类型慢性肾病（炎症、肾结石等）
- 缺乏能量、疲劳



### 10 脑垂体

- 内分泌病，如肾上腺皮质激素分泌不足
- 荷尔蒙调节



### 11 下丘脑

- 慢性神经退行性疾病或下丘脑疾病



### 12 神经系统

- 周围神经系统疾病，包括神经炎、神经痛、坐骨神经痛



### 13 中枢神经系统（大脑）

- 中枢神经系统疾病，如帕金森病、脑炎、痴呆症
- 遗传性疾病，如狄兰氏综合症，戈谢氏病



### 14 全胎

- 全面修复与活力再生
- 抗衰老项目
- 激发能量



### 15 肾上腺皮质

- 糖尿病并发症
- 慢性胃炎
- 慢性肠炎
- 支气管哮喘
- 荷尔蒙调节



## 16 脐带

- 全面修复与活力再生
- 抗衰老项目
- 激发能量



## 17 前列腺

- 男性生殖系统疾病，如前列腺炎，良性前列腺增生



## 18 睾丸

- 男性荷尔蒙虚弱
- 阳痿、不孕症
- 性欲减退
- 抗衰老（针对男性）



## 19 卵巢

- 女性荷尔蒙虚弱
- 月经紊乱
- 痛经、不孕症、更年期、性欲减退
- 抗衰老（针对女性）



## 20 淋巴结

- 系统性自身免疫性疾病，如类风湿性关节炎、系统性硬化症、系统性红斑狼疮等
- 免疫系统缺陷



## 21 脊髓

- 中枢神经系统病，如脑膜炎、脊髓灰质炎和脊髓性肌肉萎缩症



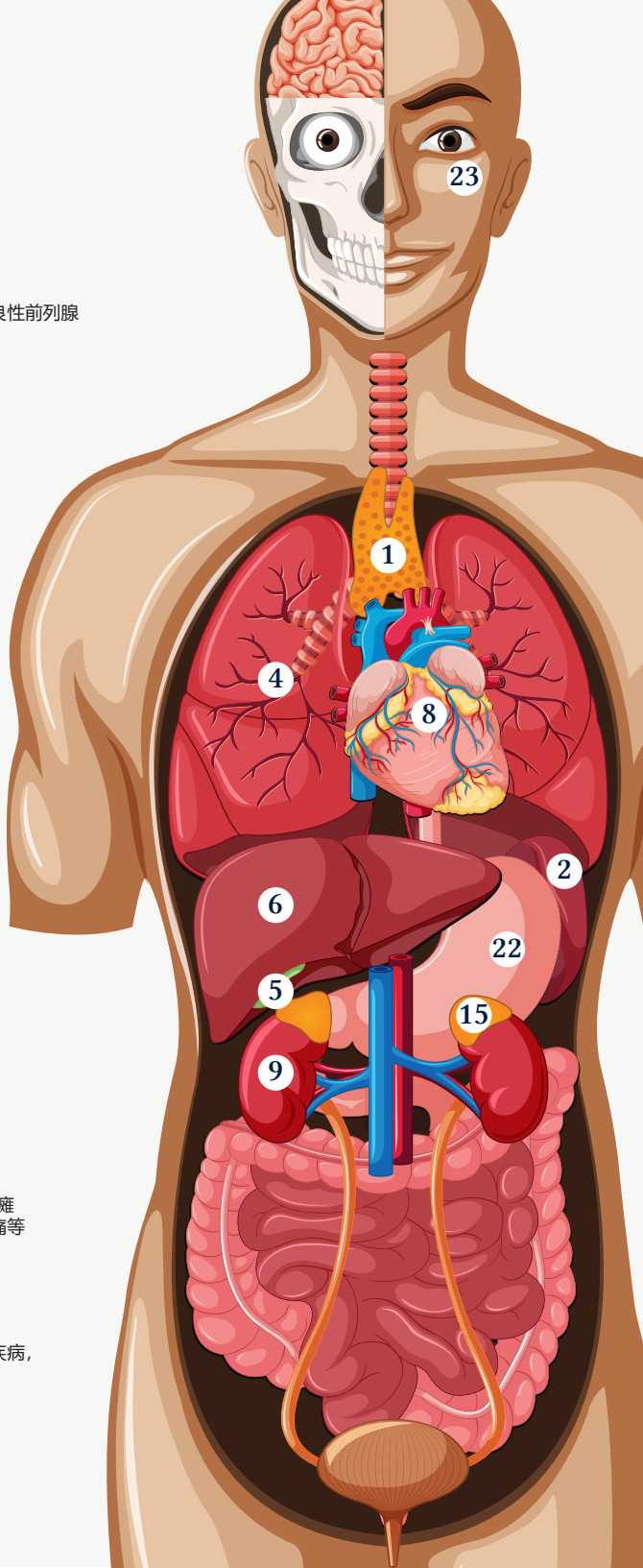
## 22 胃

- 胃-肠疾病，如胃息肉、腹泻、胃轻瘫综合征、胃炎、消化不良和慢性腹痛等



## 23 眼

- 结膜、巩膜、角膜、虹膜和睫状体疾病，如结膜炎、巩膜炎、圆锥角膜
- 糖尿病诱发病--视网膜病变



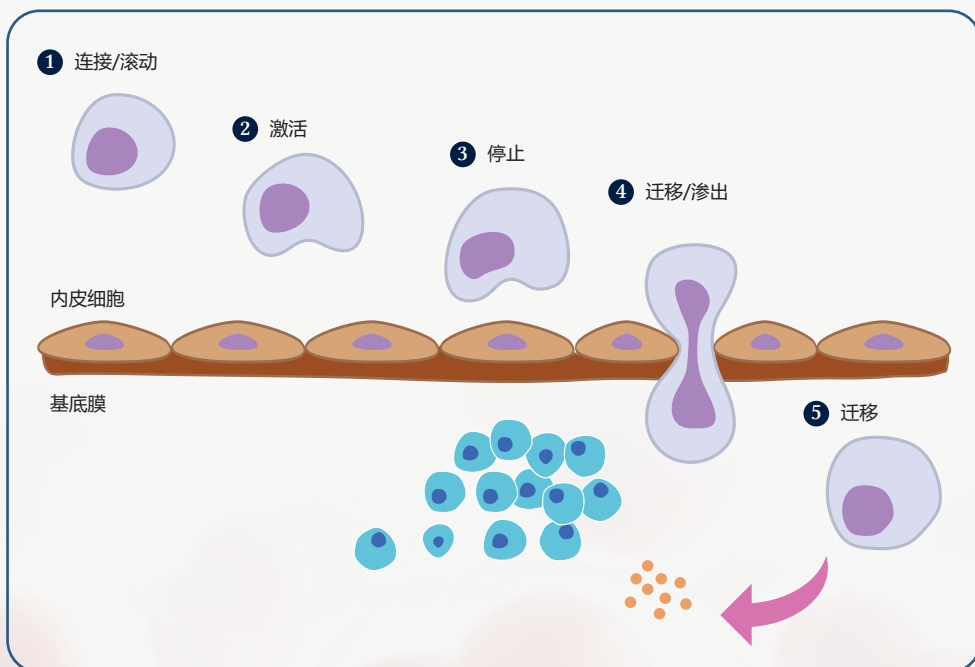


## 细胞迁移与归巢

### 何谓细胞迁移和归巢效应?

细胞迁移和归巢效应是细胞迁移至其原生器官的一种现象 ----允许细胞前往目标器官并将其植入目标器官。

细胞疗法是治疗组织和器官缺陷的最佳记录方法之一，归巢方法已被证明是将细胞迁移到缺陷部位的高度先进方式。



# 看看他们是如何从 **MF+** 冷冻器官低温剂(FOC)受益

## 我们关注您的健康



### 更年期症状

- 女性，40岁出头
- 此客户经历数年提早绝经（早发性）。在一位家庭成员的介绍下，接受了冷冻器官低温剂(FOC)治疗。治疗后，恢复月经。



### 增加能量

- 女性，50岁
- 随着年龄的增长，一直感到疲惫和缺乏能量。通过治疗后，客户重新感到精力充沛，更加活跃。体验了治疗效益后，在体验了FOC的好处后，她建议丈夫(50余岁)接受同样的治疗，治疗效果相同，精力增加。



### 增强

- 男性，50余岁
- 随着年龄增长，婚姻生活受影响。治疗后，感觉性欲及其他方面皆有增强。



### 估算的肾小球滤过率(eGFR)，有改善

- 女性，40余岁
- 获诊断为第3期慢性肾脏病(CKD)。接受第1次治疗后，血液测试报告显示有改善。继续取得更多健康效益。



# MF+ 常见问题

## ① 产品在哪里生产？

德国。

## ② 多久才能看到任何显著效果？

根据病人的生理因素（年龄、性别、生活方式等）以及任何现有病情而有所不同。

## ③ 个疗程需要多长时间？

这取决于病人的健康状况与病情。然而，一个成功疗程的疗效可以持续1年，生活压力过大者除外；或许需要每年接受1次跟进治疗，如密多细胞器胜肽(MO)或/和纳米器官胜肽(NOP)治疗。

## ④ 使用产品后，会有什么副作用？

根据患者健康状况、现有病情、年龄、体重、性别和使用产品，不良影响状况因人而异。曾被记录在案的不良反应有，轻微发热，虚弱，发红和发痒。

## ⑤ 为何选用绵羊？

- ✓ 无人畜共患病传播记录
- ✓ 不属于反转录病毒科(病毒)分类
- ✓ 绵羊遗传学与人类遗传学不一致，对病患的长期治疗，具有良好兼容性
- ✓ 供应充足
- ✓ 封闭式群体方式饲养，40余代，欧洲认证

## ⑥ 冷冻器官低温剂(FOC)疗法与其他疗法有何区别？

| 成分     | 产品等级            | 来源   | 毫升    | 瓶数                  |
|--------|-----------------|------|-------|---------------------|
| 活细胞    | ★★★★★<br>FOC    | 1 绵羊 | 5 ml  | 6 - 8 小瓶            |
| 提取物和多肽 | ★★★★★<br>FOP    | 1 绵羊 | 2.5ml | 20 - 30 小瓶          |
|        | ★★★★★<br>MO     | 1 兔  |       | 30 - 40 小瓶          |
|        | ★★★★★<br>NOP    | 1 兔  |       | 30 - 60 小瓶          |
| 氨基酸提取物 | ★★<br>其他（汇集提取物） | 不详   |       | 6,500 至 8,500<br>小瓶 |

## 封闭式群体与无特定病原体(SPF)认证

August 9, 1916.

## Statement of Closed Colony Certification

The Cavendish New Zealand White rabbit designated as strain "Hes" (NZW SP)<sup>1</sup> is produced in barrier facility breeding colonies maintained under strict biosecurity procedures (wet shower in, dedicated staff, facility clothing, etc.). These breeding colonies are completely closed to external rabbit sources or external genetics.

The breeding colonies have functioned as closed colonies with no new introductions of external rabbits or genetic for over 40 years. In order to prevent inbreeding under these circumstances, the National Institutes of Health Circular Pair Breeding Scheme has been replicated under the guidance of a geneticist. A full pedigree history of each breeder rabbit is maintained.

As a USDA Accredited Veterinarian (Federal Accreditation #063299) and as the Attending Veterinarian for the rabbit breeding colonies, I hereby certify the above statements to be true and correct.

Paul E. Venable, DVM 9 Aug 2011  
Signature of Accredited Veterinarian Date

Paul E. Knopley, DVM  
Attending Veterinarian  
Cervance Research Products Inc.  
310 Swamp Bridge Road  
Denver, PA 17517

9 Aug 2010

charles river  
Rabbit VAF Report  
North America

[illegible]

HOUSED STRAINS

Page 1 of 1

Reported on Friday, March 24, 2017 at 6:29 GMT

charles river  
Rabbit VAF Report  
North America

| Sampling Item       | Digital Unit Test |            |              |              |
|---------------------|-------------------|------------|--------------|--------------|
|                     | Method            | Test Point | Pass or Fail | Pass or Fail |
| <b>Microbiology</b> |                   |            |              |              |
| ASTM 11             | MFA               | 13-04-2017 | 0            | 0            |
| ASTM 12             | MFA               | 13-04-2017 | 0            | 0            |
| ASTM 13             | MFA               | 13-04-2017 | 0            | 0            |
| ASTM 14             | MFA               | 13-04-2017 | 0            | 0            |
| ASTM 15             | MFA               | 13-04-2017 | 0            | 0            |
| ASTM 16             | MFA               | 13-04-2017 | 0            | 0            |
| ASTM 17             | MFA               | 13-04-2017 | 0            | 0            |
| ASTM 18             | MFA               | 13-04-2017 | 0            | 0            |
| ASTM 19             | MFA               | 13-04-2017 | 0            | 0            |
| ASTM 20             | MFA               | 13-04-2017 | 0            | 0            |
| ASTM 21             | MFA               | 13-04-2017 | 0            | 0            |
| ASTM 22             | MFA               | 13-04-2017 | 0            | 0            |
| ASTM 23             | MFA               | 13-04-2017 | 0            | 0            |
| ASTM 24             | MFA               | 13-04-2017 | 0            | 0            |
| ASTM 25             | MFA               | 13-04-2017 | 0            | 0            |
| ASTM 26             | MFA               | 13-04-2017 | 0            | 0            |
| ASTM 27             | MFA               | 13-04-2017 | 0            | 0            |
| ASTM 28             | MFA               | 13-04-2017 | 0            | 0            |
| ASTM 29             | MFA               | 13-04-2017 | 0            | 0            |
| ASTM 30             | MFA               | 13-04-2017 | 0            | 0            |
| ASTM 31             | MFA               | 13-04-2017 | 0            | 0            |
| ASTM 32             | MFA               | 13-04-2017 | 0            | 0            |
| ASTM 33             | MFA               | 13-04-2017 | 0            | 0            |
| ASTM 34             | MFA               | 13-04-2017 | 0            | 0            |
| ASTM 35             | MFA               | 13-04-2017 | 0            | 0            |
| ASTM 36             | MFA               | 13-04-2017 | 0            | 0            |
| ASTM 37             | MFA               | 13-04-2017 | 0            | 0            |
| ASTM 38             | MFA               | 13-04-2017 | 0            | 0            |
| ASTM 39             | MFA               | 13-04-2017 | 0            | 0            |
| ASTM 40             | MFA               | 13-04-2017 | 0            | 0            |
| ASTM 41             | MFA               | 13-04-2017 | 0            | 0            |
| ASTM 42             | MFA               | 13-04-2017 | 0            | 0            |
| ASTM 43             | MFA               | 13-04-2017 | 0            | 0            |
| ASTM 44             | MFA               | 13-04-2017 | 0            | 0            |
| ASTM 45             | MFA               | 13-04-2017 | 0            | 0            |
| ASTM 46             | MFA               | 13-04-2017 | 0            | 0            |
| ASTM 47             | MFA               | 13-04-2017 | 0            | 0            |
| ASTM 48             | MFA               | 13-04-2017 | 0            | 0            |
| ASTM 49             | MFA               | 13-04-2017 | 0            | 0            |
| ASTM 50             | MFA               | 13-04-2017 | 0            | 0            |
| ASTM 51             | MFA               | 13-04-2017 | 0            | 0            |
| ASTM 52             | MFA               | 13-04-2017 | 0            | 0            |
| ASTM 53             | MFA               | 13-04-2017 | 0            | 0            |
| ASTM 54             | MFA               | 13-04-2017 | 0            | 0            |
| ASTM 55             | MFA               | 13-04-2017 | 0            | 0            |
| ASTM 56             | MFA               | 13-04-2017 | 0            | 0            |
| ASTM 57             | MFA               | 13-04-2017 | 0            | 0            |
| ASTM 58             | MFA               | 13-04-2017 | 0            | 0            |
| ASTM 59             | MFA               | 13-04-2017 | 0            | 0            |
| ASTM 60             | MFA               | 13-04-2017 | 0            | 0            |
| ASTM 61             | MFA               | 13-04-2017 | 0            | 0            |
| ASTM 62             | MFA               | 13-04-2017 | 0            | 0            |
| ASTM 63             | MFA               | 13-04-2017 | 0            | 0            |
| ASTM 64             | MFA               | 13-04-2017 | 0            | 0            |
| ASTM 65             | MFA               | 13-04-2017 | 0            | 0            |
| ASTM 66             | MFA               | 13-04-2017 | 0            | 0            |
| ASTM 67             | MFA               | 13-04-2017 | 0            | 0            |
| ASTM 68             | MFA               | 13-04-2017 | 0            | 0            |
| ASTM 69             | MFA               | 13-04-2017 | 0            | 0            |
| ASTM 70             | MFA               | 13-04-2017 | 0            | 0            |
| ASTM 71             | MFA               | 13-04-2017 | 0            | 0            |
| ASTM 72             | MFA               | 13-04-2017 | 0            | 0            |
| ASTM 73             | MFA               | 13-04-2017 | 0            | 0            |
| ASTM 74             | MFA               | 13-04-2017 | 0            | 0            |
| ASTM 75             | MFA               | 13-04-2017 | 0            | 0            |
| ASTM 76             | MFA               | 13-04-2017 | 0            | 0            |
| ASTM 77             | MFA               | 13-04-2017 | 0            | 0            |
| ASTM 78             | MFA               | 13-04-2017 | 0            | 0            |
| ASTM 79             | MFA               | 13-04-2017 | 0            | 0            |
| ASTM 80             | MFA               | 13-04-2017 | 0            | 0            |
| ASTM 81             | MFA               | 13-04-2017 | 0            | 0            |
| ASTM 82             | MFA               | 13-04-2017 | 0            | 0            |
| ASTM 83             | MFA               | 13-04-2017 | 0            | 0            |
| ASTM 84             | MFA               | 13-04-2017 | 0            | 0            |
| ASTM 85             | MFA               | 13-04-2017 | 0            | 0            |
| ASTM 86             | MFA               | 13-04-2017 | 0            | 0            |
| ASTM 87             | MFA               | 13-04-2017 | 0            | 0            |
| ASTM 88             | MFA               | 13-04-2017 | 0            | 0            |
| ASTM 89             | MFA               | 13-04-2017 | 0            | 0            |
| ASTM 90             | MFA               | 13-04-2017 | 0            | 0            |
| ASTM 91             | MFA               | 13-04-2017 | 0            | 0            |
| ASTM 92             | MFA               | 13-04-2017 | 0            | 0            |
| ASTM 93             | MFA               | 13-04-2017 | 0            | 0            |
| ASTM 94             | MFA               | 13-04-2017 | 0            | 0            |
| ASTM 95             | MFA               | 13-04-2017 | 0            | 0            |
| ASTM 96             | MFA               | 13-04-2017 | 0            | 0            |
| ASTM 97             | MFA               | 13-04-2017 | 0            | 0            |
| ASTM 98             | MFA               | 13-04-2017 | 0            | 0            |
| ASTM 99             | MFA               | 13-04-2017 | 0            | 0            |
| ASTM 100            | MFA               | 13-04-2017 | 0            | 0            |
| ASTM 101            | MFA               | 13-04-2017 | 0            | 0            |
| ASTM 102            | MFA               | 13-04-2017 | 0            | 0            |
| ASTM 103            | MFA               | 13-04-2017 | 0            | 0            |
| ASTM 104            | MFA               | 13-04-2017 | 0            | 0            |
| ASTM 105            | MFA               | 13-04-2017 | 0            | 0            |
| ASTM 106            | MFA               | 13-04-2017 | 0            | 0            |
| ASTM 107            | MFA               | 13-04-2017 | 0            | 0            |
| ASTM 108            | MFA               | 13-04-2017 | 0            | 0            |
| ASTM 109            | MFA               | 13-04-2017 | 0            | 0            |
| ASTM 110            | MFA               | 13-04-2017 | 0            | 0            |
| ASTM 111            | MFA               | 13-04-2017 | 0            | 0            |
| ASTM 112            | MFA               | 13-04-2017 | 0            | 0            |
| ASTM 113            | MFA               | 13-04-2017 | 0            | 0            |
| ASTM 114            | MFA               | 13-04-2017 | 0            | 0            |
| ASTM 115            | MFA               | 13-04-2017 | 0            | 0            |
| ASTM 116            | MFA               | 13-04-2017 | 0            | 0            |
| ASTM 117            | MFA               | 13-04-2017 | 0            | 0            |
| ASTM 118            | MFA               | 13-04-2017 | 0            | 0            |
| ASTM 119            | MFA               | 13-04-2017 | 0            | 0            |
| ASTM 120            | MFA               | 13-04-2017 | 0            | 0            |
| ASTM 121            | MFA               | 13-04-2017 | 0            | 0            |
| ASTM 122            | MFA               | 13-04-2017 | 0            | 0            |
| ASTM 123            | MFA               | 13-04-2017 | 0            | 0            |
| ASTM 124            | MFA               | 13-04-2017 | 0            | 0            |
| ASTM 125            | MFA               | 13-04-2017 | 0            | 0            |
| ASTM 126            | MFA               | 13-04-2017 | 0            | 0            |
| ASTM 127            | MFA               | 13-04-2017 | 0            | 0            |
| ASTM 128            | MFA               | 13-04-2017 | 0            | 0            |
| ASTM 129            | MFA               | 13-04-2017 | 0            | 0            |
| ASTM 130            | MFA               | 13-04-2017 | 0            | 0            |
| ASTM 131            | MFA               | 13-04-2017 | 0            | 0            |
| ASTM 132            | MFA               | 13-04-2017 | 0            | 0            |
| ASTM 133            | MFA               | 13-04-2017 | 0            | 0            |
| ASTM 134            | MFA               | 13-04-2017 | 0            | 0            |
| ASTM 135            | MFA               | 13-04-2017 | 0            | 0            |
| ASTM 136            | MFA               | 13-04-2017 | 0            | 0            |
| ASTM 137            | MFA               | 13-04-2017 | 0            | 0            |
| ASTM 138            | MFA               | 13-04-2017 | 0            | 0            |
| ASTM 139            | MFA               | 13-04-2017 | 0            | 0            |
| ASTM 140            | MFA               | 13-04-2017 | 0            | 0            |
| ASTM 141            | MFA               | 13-04-2017 | 0            | 0            |
| ASTM 142            | MFA               | 13-04-2017 | 0            | 0            |
| ASTM 143            | MFA               | 13-04-2017 | 0            | 0            |
| ASTM 144            | MFA               | 13-04-2017 | 0            | 0            |
| ASTM 145            | MFA               | 13-04-2017 | 0            | 0            |
| ASTM 146            | MFA               | 13-04-2017 | 0            | 0            |
| ASTM 147            | MFA               | 13-04-2017 | 0            | 0            |
| ASTM 148            | MFA               | 13-04-2017 | 0            | 0            |
| ASTM 149            | MFA               | 13-04-2017 | 0            | 0            |
| ASTM 150            | MFA               | 13-04-2017 | 0            | 0            |
| ASTM 151            | MFA               | 13-04-2017 | 0            | 0            |
| ASTM 152            | MFA               | 13-04-2017 | 0            | 0            |
| ASTM 153            | MFA               | 13-04-2017 | 0            | 0            |
| ASTM 154            | MFA               | 13-04-2017 | 0            | 0            |
| ASTM 155            | MFA               | 13-04-2017 | 0            | 0            |
| ASTM 156            | MFA               | 13-04-2017 | 0            | 0            |
| ASTM 157            | MFA               | 13-04-2017 | 0            | 0            |
| ASTM 158            | MFA               | 13-04-2017 | 0            | 0            |
| ASTM 159            | MFA               | 13-04-2017 | 0            | 0            |
| ASTM 160            | MFA               | 13-04-2017 | 0            | 0            |
| ASTM 161            | MFA               | 13-04-2017 | 0            | 0            |
| ASTM 162            | MFA               | 13-04-2017 | 0            | 0            |
| ASTM 163            | MFA               | 13-04-2017 | 0            | 0            |
| ASTM 164            | MFA               | 13-04-2017 | 0            | 0            |
| ASTM 165            | MFA               | 13-04-2017 | 0            | 0            |
| ASTM 166            | MFA               | 13-04-2017 | 0            | 0            |
| ASTM 167            | MFA               | 13-04-2017 | 0            | 0            |
| ASTM 168            | MFA               | 13-04-2017 | 0            | 0            |
| ASTM 169            | MFA               | 13-04-2017 | 0            | 0            |
| ASTM 170            | MFA               | 13-04-2017 | 0            | 0            |
| ASTM 171            | MFA               | 13-04-2017 | 0            | 0            |
| ASTM 172            | MFA               | 13-04-2017 | 0            | 0            |
| ASTM 173            | MFA               | 13-04-2017 | 0            | 0            |
| ASTM 174            | MFA               | 13-04-2017 | 0            | 0            |
| ASTM 175            | MFA               | 13-04-2017 | 0            | 0            |
| ASTM 176            | MFA               | 13-04-2017 | 0            | 0            |
| ASTM 177            | MFA               | 13-04-2017 | 0            | 0            |
| ASTM 178            | MFA               | 13-04-2017 | 0            | 0            |
| ASTM 179            | MFA               | 13-04-2017 | 0            | 0            |
| ASTM 180            | MFA               | 13-04-2017 | 0            | 0            |
| ASTM 181            | MFA               | 13-04-2017 | 0            | 0            |
| ASTM 182            | MFA               | 13-04-2017 | 0            | 0            |
| ASTM 183            | MFA               | 13-04-2017 | 0            | 0            |
| ASTM 184            | MFA               | 13-04-2017 | 0            | 0            |
| ASTM 185            | MFA               | 13-04-2017 | 0            | 0            |
| ASTM 186            | MFA               | 13-04-2017 | 0            | 0            |
| ASTM 187            | MFA               | 13-04-2017 | 0            | 0            |
| ASTM 188            | MFA               | 13-04-2017 | 0            | 0            |
| ASTM 189            | MFA               | 13-04-2017 | 0            | 0            |
| ASTM 190            | MFA               | 13-04-2017 | 0            | 0            |
| ASTM 191            | MFA               | 13-04-2017 | 0            | 0            |
| ASTM 192            | MFA               | 13-04-2017 | 0            | 0            |
| ASTM 193            | MFA               | 13-04-2017 | 0            | 0            |
| ASTM 194            | MFA               | 13-04-2017 | 0            | 0            |
| ASTM 195            | MFA               | 13-04-2017 | 0            | 0            |
| ASTM 196            | MFA               | 13-04-2017 | 0            | 0            |
| ASTM 197            | MFA               | 13-04-2017 | 0            | 0            |
| ASTM 198            | MFA               | 13-04-2017 | 0            | 0            |
| ASTM 199            | MFA               | 13-04-2017 | 0            | 0            |
| ASTM 200            | MFA               | 13-04-2017 | 0            | 0            |
| ASTM 201            | MFA               | 13-04-2017 | 0            | 0            |
| ASTM 202            | MFA               | 13-04-2017 | 0            | 0            |
| ASTM 203            | MFA               | 13-04-2017 | 0            | 0            |
| ASTM 204            | MFA               | 13-04-2017 | 0            | 0            |
| ASTM 205            | MFA               | 13-04-2017 | 0            | 0            |
| ASTM 206            | MFA               | 13-04-2017 | 0            | 0            |
| ASTM 207            | MFA               | 13-04-2017 | 0            | 0            |
| ASTM 208            | MFA               | 13-04-2017 | 0            | 0            |
| ASTM 209            | MFA               | 13-04-2017 | 0            | 0            |
| ASTM 210            | MFA               | 13-04-2017 | 0            | 0            |
| ASTM 211            | MFA               | 13-04-2017 | 0            | 0            |
| ASTM 212            | MFA               | 13-04-2017 | 0            | 0            |
| ASTM 213            | MFA               | 13-04-2017 | 0            | 0            |
| ASTM 214            | MFA               | 13-04-2017 | 0            | 0            |
| ASTM 215            | MFA               | 13-04-2017 | 0            | 0            |
| ASTM 216            | MFA               | 13-04-2017 | 0            | 0            |
| ASTM 217            | MFA               | 13-04-2017 | 0            | 0            |
| ASTM 218            | MFA               | 13-04-2017 | 0            | 0            |
| ASTM 219            | MFA               | 13-04-2017 | 0            | 0            |
| ASTM 220            | MFA               | 13-04-2017 | 0            | 0            |
| ASTM 221            | MFA               | 13-04-2017 | 0            | 0            |
| ASTM 222            | MFA               | 13-04-2017 | 0            | 0            |
| ASTM 223            | MFA               | 13-04-2017 | 0            | 0            |
| ASTM 224            | MFA               | 13-04-2017 | 0            | 0            |
| ASTM 225            | MFA               | 13-04-2017 | 0            | 0            |
| ASTM 226            | MFA               | 13-04-2017 | 0            | 0            |
| ASTM 227            | MFA               | 13-04-2017 | 0            | 0            |
| ASTM 228            | MFA               | 13-04-2017 | 0            | 0            |
| ASTM 229            | MFA               | 13-04-2017 | 0            | 0            |
| ASTM 230            | MFA               | 13-04-2017 | 0            | 0            |
| ASTM 231            | MFA               | 13-04-2017 | 0            | 0            |
| ASTM 232            | MFA               | 13-04-2017 | 0            | 0            |
| ASTM 233            | MFA               | 13-04-2017 | 0            | 0            |
| ASTM 234            | MFA               | 13-04-2017 | 0            | 0            |
| ASTM 235            | MFA               | 13-04-2017 | 0            | 0            |
| ASTM 236            | MFA               | 13-04-2017 | 0            | 0            |
| ASTM 237            | MFA               | 13-04-2017 | 0            | 0            |
| ASTM 238            | MFA               | 13-04-2017 | 0            | 0            |
| ASTM 239            | MFA               | 13-04-2017 | 0            | 0            |
| ASTM 240            | MFA               | 13-04-2017 | 0            | 0            |
| ASTM 241            | MFA               | 13-04-2017 | 0            | 0            |
| ASTM 242            | MFA               | 13-04-2017 | 0            | 0            |
| ASTM 243            | MFA               | 13-04-2017 | 0            | 0            |
| ASTM 244            | MFA               | 13-04-2017 | 0            | 0            |
| ASTM 245            | MFA               | 13-04-2017 | 0            | 0            |
| ASTM 246            | MFA               | 13-04-2017 | 0            | 0            |
| ASTM 247            | MFA               | 13-04-2017 | 0            | 0            |
| ASTM 248            | MFA               | 13-04-2017 | 0            | 0            |
| ASTM 249            | MFA               | 13-04-2017 | 0            | 0            |
| ASTM 250            | MFA               | 13-04-2017 | 0            | 0            |
| ASTM 251            | MFA               | 13-04-2017 | 0            | 0            |
| ASTM 252            | MFA               | 13-04-2017 | 0            | 0            |
| ASTM 253            | MFA               | 13-04-2017 | 0            | 0            |
| ASTM 254            | MFA               | 13-04-2017 | 0            | 0            |
| ASTM 255            | MFA               | 13-04-2017 | 0            | 0            |
| ASTM 256            | MFA               | 13-04-2017 | 0            | 0            |
| ASTM 257            | MFA               | 13-04-2017 | 0            | 0            |
| ASTM 258            | MFA               | 13-04-2017 | 0            | 0            |
| ASTM 259            | MFA               | 13-04-2017 | 0            | 0            |
| ASTM 260            | MFA               | 13-04-2017 | 0            | 0            |
| ASTM 261            | MFA               | 13-04-2017 | 0            | 0            |
| ASTM 262            | MFA               | 13-04-2017 | 0            | 0            |
| ASTM 263            | MFA               | 13-04-2017 | 0            | 0            |
| ASTM 264            | MFA               | 13-04-2017 | 0            | 0            |
| ASTM 265            | MFA               | 13-04-2017 | 0            | 0            |
| ASTM 266            | MFA               | 13-04-2017 | 0            | 0            |
| ASTM 267            | MFA               | 13-04-2017 | 0            | 0            |
| ASTM 268            | MFA               | 13-04-2017 | 0            | 0            |
| ASTM 269</          |                   |            |              |              |

HOUSED STRAIN: Outbred

Page 5 of 5

Received 18 February 2017; accepted 24 April 2017; published online 10 May 2017

### ANIMAL HEALTH MONITORING

June 2016

| June 2016                | New Feature/Written        |                            |                            |                            | Dead End<br>Story | Other<br>Feature/Plot<br>Story |
|--------------------------|----------------------------|----------------------------|----------------------------|----------------------------|-------------------|--------------------------------|
|                          | 12/14/15<br>to<br>12/15/15 | 12/16/15<br>to<br>12/17/15 | 12/18/15<br>to<br>12/19/15 | 12/20/15<br>to<br>12/21/15 |                   |                                |
| Continued from last page | 228                        | 229                        | 230                        | 231                        | 232               | 233                            |
| Continued from last page | 234                        | 235                        | 236                        | 237                        | 238               | 239                            |
| Continued from last page | 240                        | 241                        | 242                        | 243                        | 244               | 245                            |
| Continued from last page | 246                        | 247                        | 248                        | 249                        | 250               | 251                            |
| Continued from last page | 252                        | 253                        | 254                        | 255                        | 256               | 257                            |
| Continued from last page | 258                        | 259                        | 260                        | 261                        | 262               | 263                            |
| Continued from last page | 264                        | 265                        | 266                        | 267                        | 268               | 269                            |
| Continued from last page | 270                        | 271                        | 272                        | 273                        | 274               | 275                            |
| Continued from last page | 276                        | 277                        | 278                        | 279                        | 280               | 281                            |
| Continued from last page | 282                        | 283                        | 284                        | 285                        | 286               | 287                            |
| Continued from last page | 288                        | 289                        | 290                        | 291                        | 292               | 293                            |
| Continued from last page | 294                        | 295                        | 296                        | 297                        | 298               | 299                            |
| Continued from last page | 300                        | 301                        | 302                        | 303                        | 304               | 305                            |
| Continued from last page | 306                        | 307                        | 308                        | 309                        | 310               | 311                            |
| Continued from last page | 312                        | 313                        | 314                        | 315                        | 316               | 317                            |
| Continued from last page | 318                        | 319                        | 320                        | 321                        | 322               | 323                            |
| Continued from last page | 324                        | 325                        | 326                        | 327                        | 328               | 329                            |
| Continued from last page | 330                        | 331                        | 332                        | 333                        | 334               | 335                            |
| Continued from last page | 336                        | 337                        | 338                        | 339                        | 340               | 341                            |
| Continued from last page | 342                        | 343                        | 344                        | 345                        | 346               | 347                            |
| Continued from last page | 348                        | 349                        | 350                        | 351                        | 352               | 353                            |
| Continued from last page | 354                        | 355                        | 356                        | 357                        | 358               | 359                            |
| Continued from last page | 360                        | 361                        | 362                        | 363                        | 364               | 365                            |
| Continued from last page | 366                        | 367                        | 368                        | 369                        | 370               | 371                            |
| Continued from last page | 372                        | 373                        | 374                        | 375                        | 376               | 377                            |
| Continued from last page | 378                        | 379                        | 380                        | 381                        | 382               | 383                            |
| Continued from last page | 384                        | 385                        | 386                        | 387                        | 388               | 389                            |
| Continued from last page | 390                        | 391                        | 392                        | 393                        | 394               | 395                            |
| Continued from last page | 396                        | 397                        | 398                        | 399                        | 400               | 401                            |
| Continued from last page | 402                        | 403                        | 404                        | 405                        | 406               | 407                            |
| Continued from last page | 408                        | 409                        | 410                        | 411                        | 412               | 413                            |
| Continued from last page | 414                        | 415                        | 416                        | 417                        | 418               | 419                            |
| Continued from last page | 420                        | 421                        | 422                        | 423                        | 424               | 425                            |
| Continued from last page | 426                        | 427                        | 428                        | 429                        | 430               | 431                            |
| Continued from last page | 432                        | 433                        | 434                        | 435                        | 436               | 437                            |
| Continued from last page | 438                        | 439                        | 440                        | 441                        | 442               | 443                            |
| Continued from last page | 444                        | 445                        | 446                        | 447                        | 448               | 449                            |
| Continued from last page | 450                        | 451                        | 452                        | 453                        | 454               | 455                            |
| Continued from last page | 456                        | 457                        | 458                        | 459                        | 460               | 461                            |
| Continued from last page | 462                        | 463                        | 464                        | 465                        | 466               | 467                            |
| Continued from last page | 468                        | 469                        | 470                        | 471                        | 472               | 473                            |
| Continued from last page | 474                        | 475                        | 476                        | 477                        | 478               | 479                            |
| Continued from last page | 480                        | 481                        | 482                        | 483                        | 484               | 485                            |
| Continued from last page | 486                        | 487                        | 488                        | 489                        | 490               | 491                            |
| Continued from last page | 492                        | 493                        | 494                        | 495                        | 496               | 497                            |
| Continued from last page | 498                        | 499                        | 500                        | 501                        | 502               | 503                            |
| Continued from last page | 504                        | 505                        | 506                        | 507                        | 508               | 509                            |
| Continued from last page | 510                        | 511                        | 512                        | 513                        | 514               | 515                            |
| Continued from last page | 516                        | 517                        | 518                        | 519                        | 520               | 521                            |
| Continued from last page | 522                        | 523                        | 524                        | 525                        | 526               | 527                            |
| Continued from last page | 528                        | 529                        | 530                        | 531                        | 532               | 533                            |
| Continued from last page | 534                        | 535                        | 536                        | 537                        | 538               | 539                            |
| Continued from last page | 540                        | 541                        | 542                        | 543                        | 544               | 545                            |
| Continued from last page | 546                        | 547                        | 548                        | 549                        | 550               | 551                            |
| Continued from last page | 552                        | 553                        | 554                        | 555                        | 556               | 557                            |
| Continued from last page | 558                        | 559                        | 560                        | 561                        | 562               | 563                            |
| Continued from last page | 564                        | 565                        | 566                        | 567                        | 568               | 569                            |
| Continued from last page | 570                        | 571                        | 572                        | 573                        | 574               | 575                            |
| Continued from last page | 576                        | 577                        | 578                        | 579                        | 580               | 581                            |
| Continued from last page | 582                        | 583                        | 584                        | 585                        | 586               | 587                            |
| Continued from last page | 588                        | 589                        | 590                        | 591                        | 592               | 593                            |
| Continued from last page | 594                        | 595                        | 596                        | 597                        | 598               | 599                            |
| Continued from last page | 600                        | 601                        | 602                        | 603                        | 604               | 605                            |
| Continued from last page | 606                        | 607                        | 608                        | 609                        | 610               | 611                            |
| Continued from last page | 612                        | 613                        | 614                        | 615                        | 616               | 617                            |
| Continued from last page | 618                        | 619                        | 620                        | 621                        | 622               | 623                            |
| Continued from last page | 624                        | 625                        | 626                        | 627                        | 628               | 629                            |
| Continued from last page | 630                        | 631                        | 632                        | 633                        | 634               | 635                            |
| Continued from last page | 636                        | 637                        | 638                        | 639                        | 640               | 641                            |
| Continued from last page | 642                        | 643                        | 644                        | 645                        | 646               | 647                            |
| Continued from last page | 648                        | 649                        | 650                        | 651                        | 652               | 653                            |
| Continued from last page | 654                        | 655                        | 656                        | 657                        | 658               | 659                            |
| Continued from last page | 660                        | 661                        | 662                        | 663                        | 664               | 665                            |
| Continued from last page | 666                        | 667                        | 668                        | 669                        | 670               | 671                            |
| Continued from last page | 672                        | 673                        | 674                        | 675                        | 676               | 677                            |
| Continued from last page | 678                        | 679                        | 680                        | 681                        | 682               | 683                            |
| Continued from last page | 684                        | 685                        | 686                        | 687                        | 688               | 689                            |
| Continued from last page | 690                        | 691                        | 692                        | 693                        | 694               | 695                            |
| Continued from last page | 696                        | 697                        | 698                        | 699                        | 700               | 701                            |
| Continued from last page | 702                        | 703                        | 704                        | 705                        | 706               | 707                            |
| Continued from last page | 708                        | 709                        | 710                        | 711                        | 712               | 713                            |
| Continued from last page | 714                        | 715                        | 716                        | 717                        | 718               | 719                            |
| Continued from last page | 720                        | 721                        | 722                        | 723                        | 724               | 725                            |
| Continued from last page | 726                        | 727                        | 728                        | 729                        | 730               | 731                            |
| Continued from last page | 732                        | 733                        | 734                        | 735                        | 736               | 737                            |
| Continued from last page | 738                        | 739                        | 740                        | 741                        | 742               | 743                            |
| Continued from last page | 744                        | 745                        | 746                        | 747                        | 748               | 749                            |
| Continued from last page | 750                        | 751                        | 752                        | 753                        | 754               | 755                            |
| Continued from last page | 756                        | 757                        | 758                        | 759                        | 760               | 761                            |
| Continued from last page | 762                        | 763                        | 764                        | 765                        | 766               | 767                            |
| Continued from last page | 768                        | 769                        | 770                        | 771                        | 772               | 773                            |
| Continued from last page | 774                        | 775                        | 776                        | 777                        | 778               | 779                            |
| Continued from last page | 780                        | 781                        | 782                        | 783                        | 784               | 785                            |
| Continued from last page | 786                        | 787                        | 788                        | 789                        | 790               | 791                            |
| Continued from last page | 792                        | 793                        | 794                        | 795                        | 796               | 797                            |
| Continued from last page | 798                        | 799                        | 800                        | 801                        | 802               | 803                            |
| Continued from last page | 804                        | 805                        | 806                        | 807                        | 808               | 809                            |
| Continued from last page | 810                        | 811                        | 812                        | 813                        | 814               | 815                            |
| Continued from last page | 816                        | 817                        | 818                        | 819                        | 820               | 821                            |
| Continued from last page | 822                        | 823                        | 824                        | 825                        | 826               | 827                            |
| Continued from last page | 828                        | 829                        | 830                        | 831                        | 832               | 833                            |
| Continued from last page | 834                        | 835                        | 836                        | 837                        | 838               | 839                            |
| Continued from last page | 840                        | 841                        | 842                        | 843                        | 844               | 845                            |
| Continued from last page | 846                        | 847                        | 848                        | 849                        | 850               | 851                            |
| Continued from last page | 852                        | 853                        | 854                        | 855                        | 856               | 857                            |
| Continued from last page | 858                        | 859                        | 860                        | 861                        | 862               | 863                            |
| Continued from last page | 864                        | 865                        | 866                        | 867                        | 868               | 869                            |
| Continued from last page | 870                        | 871                        | 872                        | 873                        | 874               | 875                            |
| Continued from last page | 876                        | 877                        | 878                        | 879                        | 880               | 881                            |
| Continued from last page | 882                        | 883                        | 884                        | 885                        | 886               | 887                            |
| Continued from last page | 888                        | 889                        | 890                        | 891                        | 892               | 893                            |
| Continued from last page | 894                        | 895                        | 896                        | 897                        | 898               | 899                            |
| Continued from last page | 900                        | 901                        | 902                        | 903                        | 904               | 905                            |
| Continued from last page | 906                        | 907                        | 908                        | 909                        | 910               | 911                            |
| Continued from last page | 912                        | 913                        | 914                        | 915                        | 916               | 917                            |
| Continued from last page | 918                        | 919                        | 920                        | 921                        | 922               | 923                            |
| Continued from last page | 924                        | 925                        | 926                        | 927                        | 928               | 929                            |
| Continued from last page | 930                        | 931                        | 932                        | 933                        | 934               | 935                            |
| Continued from last page | 936                        | 937                        | 938                        | 939                        | 940               | 941                            |
| Continued from last page | 942                        | 943                        | 944                        | 945                        | 946               | 947                            |
| Continued from last page | 948                        | 949                        | 950                        | 951                        | 952               | 953                            |
| Continued from last page | 954                        | 955                        | 956                        | 957                        | 958               | 959                            |
| Continued from last page | 960                        | 961                        | 962                        | 963                        | 964               | 965                            |
| Continued from last page | 966                        | 967                        | 968                        | 969                        | 970               | 971                            |
| Continued from last page | 972                        | 973                        | 974                        | 975                        | 976               | 977                            |
| Continued from last page | 978                        | 979                        | 980                        | 981                        | 982               | 983                            |
| Continued from last page | 984                        | 985                        | 986                        | 987                        | 988               | 989                            |
| Continued from last page | 990                        | 991                        | 992                        | 993                        | 994               | 995                            |
| Continued from last page | 996                        | 997                        | 998                        | 999                        | 1000              | 1001                           |
| Continued from last page | 1002                       | 1003                       | 1004                       | 1005                       | 1006              | 1007                           |
| Continued from last page | 1008                       | 1009                       | 1010                       | 1011                       | 1012              | 1013                           |
| Continued from last page | 1014                       | 1015                       | 1016                       | 1017                       | 1018              | 1019                           |
| Continued from last page | 1020                       | 1021                       | 1022                       | 1023                       | 1024              | 1025                           |
| Continued from last page | 1026                       | 1027                       | 1028                       | 1029                       | 1030              | 1031                           |
| Continued from last page | 1032                       | 1033                       | 1034                       | 1035                       | 1036              | 1037                           |
| Continued from last page | 1038                       | 1039                       | 1040                       | 1041                       | 1042              | 1043                           |
| Continued from last page | 1044                       | 1045                       | 1046                       | 1047                       | 1048              | 1049                           |
| Continued from last page | 1050                       | 1051                       | 1052                       | 1053                       | 1054              | 1055                           |
| Continued from last page | 1056                       | 1057                       | 1058                       | 1059                       | 1060              | 1061                           |
| Continued from last page | 1062                       | 1063                       | 1064                       | 1065                       | 1066              | 1067                           |
| Continued from last page | 1068                       | 1069                       | 1070                       | 1071                       | 1072              | 1073                           |
| Continued from last page | 1074                       | 1075                       | 1076                       | 1077                       | 1078              | 1079                           |
| Continued from last page | 1080                       | 1081                       | 1082                       | 1083                       | 1084              | 1085                           |
| Continued from last page | 1086                       | 1087                       | 1088                       | 1089                       | 1090              | 1091                           |
| Continued from last page | 1092                       | 1093                       | 1094                       | 1095                       | 1096              | 1097                           |
| Continued from last page | 1098                       | 1099                       | 1100                       | 1101                       | 1102              | 1103                           |
| Continued from last page | 1104                       | 1105                       | 1106                       | 1107                       | 1108              | 1109                           |
| Continued from last page | 1110                       | 1111                       | 1112                       | 1113                       | 1114              | 1115                           |
| Continued from last page | 1116                       | 1117                       | 1118                       | 1119                       | 1120              | 1121                           |
| Continued from last page | 1122                       | 1123                       | 1124                       | 1125                       | 1126              | 1127                           |
| Continued from last page | 1128                       | 1129                       | 1130                       | 1131                       | 1132              | 1133                           |
| Continued from last page | 1134                       | 1135                       | 1136                       | 1137                       | 1138              | 1139                           |
| Continued from last page | 1140                       | 1141                       | 1142                       | 1143                       | 1144              | 1145                           |
| Continued from last page | 1146                       | 1147                       | 1148                       | 1149                       | 1150              | 1151                           |
| Continued from last page | 1152                       | 1153                       | 1154                       | 1155                       | 1156              | 1157                           |
| Continued from last page | 1158                       | 1159                       | 1160                       | 1161                       | 1162              | 1163                           |
| Continued from last page | 1164                       | 1165                       | 1166                       | 1167                       | 1168              | 1169                           |
| Continued from last page | 1170                       | 1171                       | 1172                       | 1173                       | 1174              | 1175                           |
| Continued from last page | 1176                       | 1177                       | 1178                       | 1179                       | 1180              | 1181                           |
| Continued from last page | 1182                       | 1183                       | 1184                       | 1185                       | 1186              | 1187                           |
| Continued from last page | 1188                       | 1189                       | 1190                       | 1191                       | 1192              | 1193                           |
| Continued from last page | 1194                       | 1195                       | 1196                       | 1197                       | 1198              | 1199                           |
| Continued from last page | 1200                       | 1201                       | 1202                       | 1203                       | 1204              | 1205                           |
| Continued from last page | 1206                       | 1207                       | 1208                       | 1209                       | 1210              | 1211                           |
| Continued from last page | 1212                       | 1213                       | 1214                       | 1215                       | 1216              | 1217                           |
| Continued from last page | 1218                       | 1219                       | 1220                       | 1221                       | 1222              | 1223                           |
| Continued from last page | 1224                       | 1225                       | 1226                       | 1227                       | 1228              | 1229                           |
| Continued from last page | 1230                       | 1231                       | 1232                       | 1233                       | 1234              | 1235                           |
| Continued from last page | 1236                       | 1237                       | 1238                       | 1239                       | 1240              | 1241                           |
| Continued from last page | 1242                       | 1243                       | 1244                       | 1245                       | 1246              | 1247                           |
| Continued from last page | 1248                       | 1249                       | 1250                       | 1251                       | 1252              | 1253                           |
| Continued from last page | 1254                       | 1255                       | 1256                       | 1257                       | 1258              | 1259                           |
| Continued from last page | 1260                       | 1261                       | 1262                       | 1263                       | 1264              | 1265                           |
| Continued from last page | 1266                       | 1267                       | 1268                       | 1269                       | 1270              | 1271                           |
| Continued from last page | 1272                       | 1273                       | 1274                       | 1275                       | 1276              | 1277                           |
| Continued from last page | 1278                       | 1279                       | 1280                       | 1281                       | 1282              | 1283                           |
| Continued from last page | 1284                       | 1285                       | 1286                       | 1287                       | 1288              | 1289                           |
| Continued from last page | 1290                       | 1291                       | 1292                       | 1293                       | 1294              | 1295                           |
| Continued from last page | 1296                       | 1297                       | 1298                       | 1299                       | 1300              | 1301                           |
| Continued from last page | 1302                       | 1303                       | 1304                       | 1305                       | 1306              | 1307                           |
| Continued from last page | 1308                       | 1309                       | 1310                       | 1311                       | 1312              | 1313                           |
| Continued from last page | 1314                       | 1315                       | 1316                       | 1317                       | 1318              | 1319                           |
| Continued from last page | 1320                       | 1321                       | 1322                       | 1323                       | 1324              | 1325                           |
| Continued from last page | 1326                       | 1327                       | 1328                       | 1329                       | 1330              | 1331                           |
| Continued from last page | 1332                       | 1333                       | 1334                       | 1335                       | 1336              | 1337                           |
| Continued from last page | 1338                       | 1339                       | 1340                       | 1341                       | 1342              | 1343                           |
| Continued from last page | 1344                       | 1345                       | 1346                       | 1347                       | 1348              | 1349                           |
| Continued from last page | 1350                       | 1351                       | 1352                       | 1353                       | 1354              | 1355                           |
| Continued from last page | 1356                       | 1357                       | 1358                       | 1359                       | 1360              | 1361                           |
| Continued from last page | 1362                       | 1363                       | 1364                       | 1365                       | 1366              | 1367                           |
| Continued from last page | 1368                       | 1369                       | 1370                       | 1371                       | 1372              | 1373                           |

© 2006 The Authors  
Journal compilation © 2006 Blackwell Publishing Ltd

charles river  
Rabbit VAF Report  
North America

| Project for International             |                         |                                       |                        |                        |                        |
|---------------------------------------|-------------------------|---------------------------------------|------------------------|------------------------|------------------------|
|                                       | Project Start           | Project End                           | Project Manager        | Project Status         | Project Budget         |
| Summary Item                          | Method                  | Primary Lab                           | Test Date              | Positive / Negative    | Positive / Negative    |
| CLINICAL POLICY FOR A POSITIVE RESULT | a = immediate isolation | a = patient must remain in the center | a = 48 hours           |                        |                        |
| TESTING SCHEDULE                      | a = extended monitoring | a = extended quarantine               | a = extended isolation | a = extended isolation | a = extended isolation |

Page 1 of 1

Received 20 February 2017; revised 24 March 2017; accepted 25 May 2017

charles river  
Rabbit VAF Report  
North America

| Decision Status   |             |                 |          |                    |                      |
|---|-------------|-----------------|----------|--------------------|----------------------|
| LAP   |             |                 |          |                    |                      |
|   |             | Mid-Year Report |          |                    | Post 18 Months       |
| Summary Item  | Statistical | Primary Call    | Top Date | Analysis - Textual | Analysis - Financial |
| COLDYR POLICY FOR A POSITIVE RESULT: a = immediate termination, b = partial term request of the country, c = no action                    |             |                 |          |                    |                      |
| TESTING SCENARIO: a = increased monthly, b = increased quarterly, c = increased annually, d = increased quarterly by multiples each month |             |                 |          |                    |                      |
| b = results do not include hypothesis or other related findings, significant results would result in immediate termination of the policy  |             |                 |          |                    |                      |

你的健康之旅从今天开始



[mf-plus.com](http://mf-plus.com)